

ModularLine

Article No. S62500

BEKK SMOOTHNESS TESTER

For:



✓ PAPER



✓ BOARD



MOST IMPORTANT BENEFITS

- ✓ 3 volumes selectable (1/1, 1/10, and 1/20)
- ✓ Built-in dead-weight: 10 kg
- ✓ 3 versions available:
 - Standard with one head – bottom side measurement
 - Reversed head – top side measurement
 - 2-head version: simultaneous bottom side and top side measurement

 **FRANK-PTI**
QUALITY TESTING INSTRUMENTS

SUBSIDIARY OF  Old Hanson

Germany

FRANK-PTI GMBH
Auf der Aue 1
69488 Birkenau
Tel.: +49 6201 84-0
office@frank-pti.com

Austria

PAPER TESTING INSTRUMENTS GMBH
Hauptstrasse 41a (at BDZ)
4663 Laakirchen
Tel.: +43 7613 90607-0
office@at.frank-pti.com

www.frank-pti.com

PRODUCT DESCRIPTION

Bekk smoothness testing is an especially informative technique for determining the smoothness of a sample. FRANK-PTI has developed this measurement principle using high grade materials and precision measurement technology, and it has been trusted by the industry for decades. The ModularLine Bekk smoothness testing device delivers outstanding results, and by extending the measurement area, very smooth samples can be tested within a reasonable time. The automatic prediction is available after just 10 seconds, with informative results.

TEST DESCRIPTION

After inserting the sample and the start of the test sequence, the test mechanism lowers. It then presses on a rubber platen, which presses the sample against a glass platen with a defined force. The integrated vacuum pump lowers the pressure in the system to 50.7 kPa. The device then records the amount of time required until the pressure difference with the surroundings is exactly 48.0 kPa. The time measured is given in Bekk seconds. With very smooth samples, the measured volumes can be altered using the software to 1/10 or even 1/20. This reduces the measurement duration to 1/10 or 1/20.

TECHNICAL DATA

DEVICE/INSTRUMENT

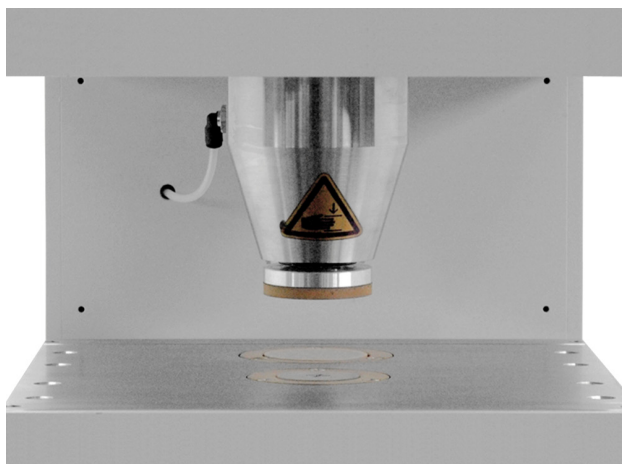
- Easy operation via the integrated touch screen
- Measuring area: 10 cm²
- Accuracy: 0.01 s
- Forecast after 10 s
- Measuring volume:
1/1 (380 ml), 1/10 (38 ml), 1/20 (19 ml)

INSTALLATION REQUIREMENTS

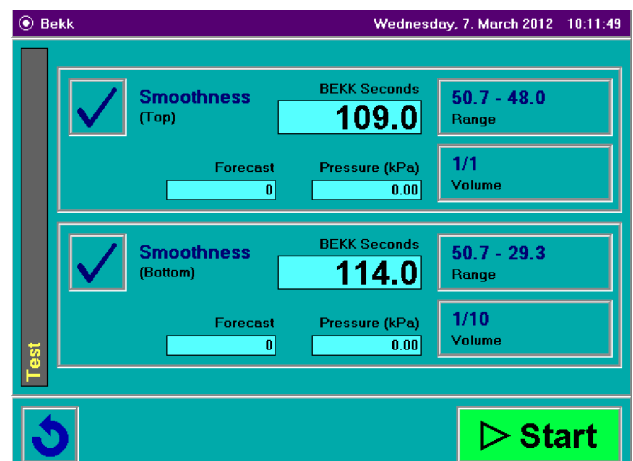
| | |
|-----------------------|--------------------------|
| Electrical connection | 110 – 230 V / 50 – 60 Hz |
| Water connection | No |
| Compressed air | 4 – 6 bar |

APPLICABLE STANDARDS

- DIN 53107
- ISO 5627
- TAPPI T479



Measuring area



User interface for 2 measuring heads: top and bottom side