



**PulpTester**

Article No. S95587

# SCHOPPER-RIEGLER FREENESS TESTER

For determination of the degree of refining of pulp-suspensions in °SR.



Digital model

## MODELS

### MANUAL MODEL

Sealing cone is lifted by an inbuilt weight

### PNEUMATIC MODEL

Sealing cone is lifted pneumatically

### DIGITAL MODEL

- Digital display of °SR-degree and 4 drainage times
- Sensor for measuring the freeness
- RS 232-port for readout of a drainage graph

## MOST IMPORTANT BENEFITS

- ✓ Housing and drainage part made of stainless steel
- ✓ ISO-nozzle, according to standards
- ✓ Single button operation (fulfills the safety regulations)

 **FRANK-PTI**  
QUALITY TESTING INSTRUMENTS

SUBSIDIARY OF  Frank

### Germany

FRANK-PTI GMBH  
Auf der Aue 1  
69488 Birkenau  
Tel.: +49 6201 84-0  
office@frank-pti.com

### Austria

PAPER TESTING INSTRUMENTS GMBH  
Hauptstrasse 41a (at BDZ)  
4663 Laakirchen  
Tel.: +43 7613 90607-0  
office@at.frank-pti.com

[www.frank-pti.com](http://www.frank-pti.com)

## PRODUCT DESCRIPTION

The drainage chamber and the hydraulic cylinder are mounted on a robust stainless steel frame. The filling chamber is sealed below with a special screen, which leads to the spreader cone. The cone has two outlet openings. A sealing cone closes the filling chamber against the spreader cone and prevents the suspension from escaping before the test actually starts. Depending on the mechanism fitted, the sealing cone lifts either pneumatically or mechanically at the speed acc. standard.

The digital version is equipped with a sensor that shows the Schopper-Riegler freeness ( $^{\circ}$ SR) on a display module, to an accuracy of 0.1  $^{\circ}$ SR.

## TEST DESCRIPTION

The pulp sample (2 g pulp), prepared with the standardised disintegrator (see page 12), is poured into the closed filling chamber. The sealing cone lifts automatically once the start button is pressed (for the digital version) or when the handle is operated (manual and pneumatic version). The suspension is drained through the screen, leaving a fibre pad, and the filtrate drains into the separating chamber. The water volume fraction drained through the side discharge pipe is collected in a  $^{\circ}$ SR measuring beaker. In the manual and pneumatic versions the freeness is readable from the Schopper-Riegler scale on the measuring beaker, and in the digital version the freeness is shown on the display module.

## TECHNICAL DATA

### DEVICE/INSTRUMENT

- Housing and drainage part made of stainless steel
- Chamber with sieve, sealing cone and separating funnel mounted on the frame
- Single button operation (fulfills the safety regulations)
- ISO-nozzle according to standards
- Included into delivery:  
 2 pcs  $^{\circ}$ SR-measuring beakers  
 C-spanner for sieve changing
- Compatible with ProbeNet

### INSTALLATION REQUIREMENTS

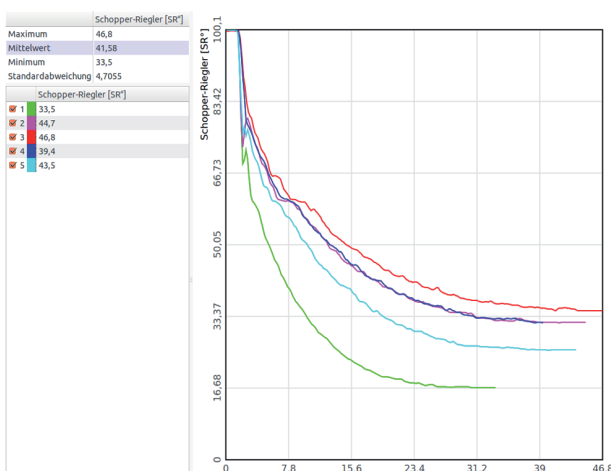
Electrical connection	100 – 230 V / 50 – 60 Hz (with digital model only)
Water connection	No
Compressed air	4 – 6 bar (with pneumatic model only)

### APPLICABLE STANDARDS

- ISO 5267-1  
 ect.



2 pieces  $^{\circ}$ SR-measuring beakers included into delivery



Drainage graph



Pneumatic and manual model