

Introducing the newest member to the Technidyne ISO family

ColorTouch™X expanding your capabilities

Simple - Accurate - Flexible - Powerful



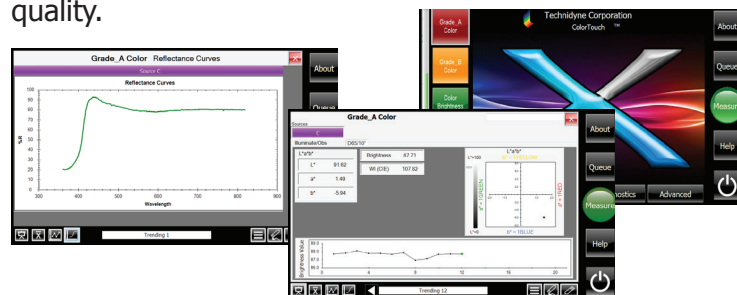
New Features:

- Expanded Wavelength Range - Provides improved analysis of UV region
- New Intuitive Operator Interface - Simple and responsive
- Data Trending - Trend data over time, grade run, shifts, etc.
- Simultaneous Grade Tracking - Track multiple grades from different sources at the same time
- Pass/Fail Alerts - Immediate notification of out of spec measurements
- APP Technology - Provides the foundation for adding new features as they become available or the development of custom APPS for your specific measurement or calculation

Since 1980 Technidyne has been producing instruments that meet the ISO Optical Standards for the global pulp and paper industry. In 1994 Technidyne brought to market the ColorTouch™ which quickly set the standard for functionality, precision and dependability.

The ColorTouch™X brings together a powerful set of tools to meet the demands of the brightness, color, fluorescence and ERIC950 markets. In addition to these traditional applications, the expanded wavelength range of the ColorTouch™X provides a higher level of accuracy and capabilities.

No other instrument in the market today can match the ColorTouch™X for capabilities, functionality and quality.



When quality matters, Technidyne is there

Headquarters

100 Quality Avenue
New Albany, IN 47150 USA
+1.812.948.2884
spectrum@technidyne.com
www.technidyne.com

Canada

540 Meloche
Dorval, Quebec H9P2T2
Canada
+1.514.631.1188
sales@technidyne.ca

China

RM502, 9/F, Di Bao
International Plaze
No.3998 Hongxin Road
Shanghai, China 201103
+86.21.5187.5199
paulc@technidyne.com

Asia

388 Exchange Tower
29th Floor
Sukumvit Road
Bangkok, Thailand 10110
+66.2.101.9203
paulc@technidyne.com

Key Features

Touch-Screen Interface

Data Export in CSV and XML via Ethernet or USB

FTP server connection capability

Remote Support w/ embedded TeamViewer

Automated Calibration w/swingIn "working" standard

APP Technology built-in for adding new features

Exact conformance to ISO standards

Touchscreen Operation

Point & Touch and the ColorTouch™X does the rest
Preprogrammed test routine to allow for easy set-up and testing

Does not require an external PC
Automatic Calibration
Swing-in Calibration Standard

Advanced Data Analysis

Trending data allows for tracking grades over several samples

Compare multiple samples on various color plots
Establish optical tolerances on grades for PASS/FAIL analysis

Spectral Data Capabilities

Spectrophotometric data for comprehensive understanding of dyes, fillers and other colorants

Greater accuracy of colorimetric data

Thorough analysis of metameric color matches

and much more



ColorTouch™ X Specifications

| Parameter | Specification | Parameter | Specification |
|---|----------------------------------|------------------------------------|--|
| Light Source | Pulsed Xenon | Lamp Life (number of measurements) | 500,000+ |
| Geometry | Dual Beam, d/0 | Specimen Area Measured | 30mm |
| Photometric Nonlinearity | 0.1% | Measurement Time | 2 seconds |
| Repeatability (white tile avg. 20 readings) | < 0.01 CIELAB DE | Reproducibility (Inter-instrument) | <0.20 CIELAB DE |
| Measurement Range Reflectance | 0-200% | Wavelength | 360-780nm |
| Detector | CCD 131,000 Pixels | Spectrometer | Dual Blaze Grating |
| Bandpass | 10 nm | Reflectance Data Intervals | 1, 5, 10, 20nm |
| Sources | D65, C, UV-EX, UV1, UV2 | Illuminants | A, B, C, D50, D55, D65, D75, F2, F7, F11 |
| Observers | CIE 2°, 10° | Color Scales | X,Y,Z/R(x),R(y),R(z)/L,a,b/L*,a*,b*/L*,C*,h/DWL,PUR,x,y,Y |
| Whiteness | CIE, ASTM, HUNTER | Tint | CIE, HUNTER |
| Yellowness | HUNTER | Opacity | Yes |
| Flourescence | Yes | Flourescence | Yes |
| Stored Standards | Yes | Color Difference | Yes |
| ERIC | Optional | Display | 10.1 Color TFT 1024 x 600 WSVGA, PCT Multi Touch Screen |
| Communications | USB, RS232, Ethernet | Hard Disk Drive | 32 GB Sata SSD |
| Operating Temperature | 13-32 degrees Celsius | USB port | Yes (4) |
| Automatic Calibration | Yes (Built-In Swing In Standard) | Industry Standards | ISO: 2469,2470,2471,11475,11476, 5631/TAPPI: 519, 525, 527, 534, 560 |
| Weight | 45 # /20.4 kg | Height | 23.5" /60 cm |